

Rat-Marsh River Watershed: Sand and Gravel Aquifers

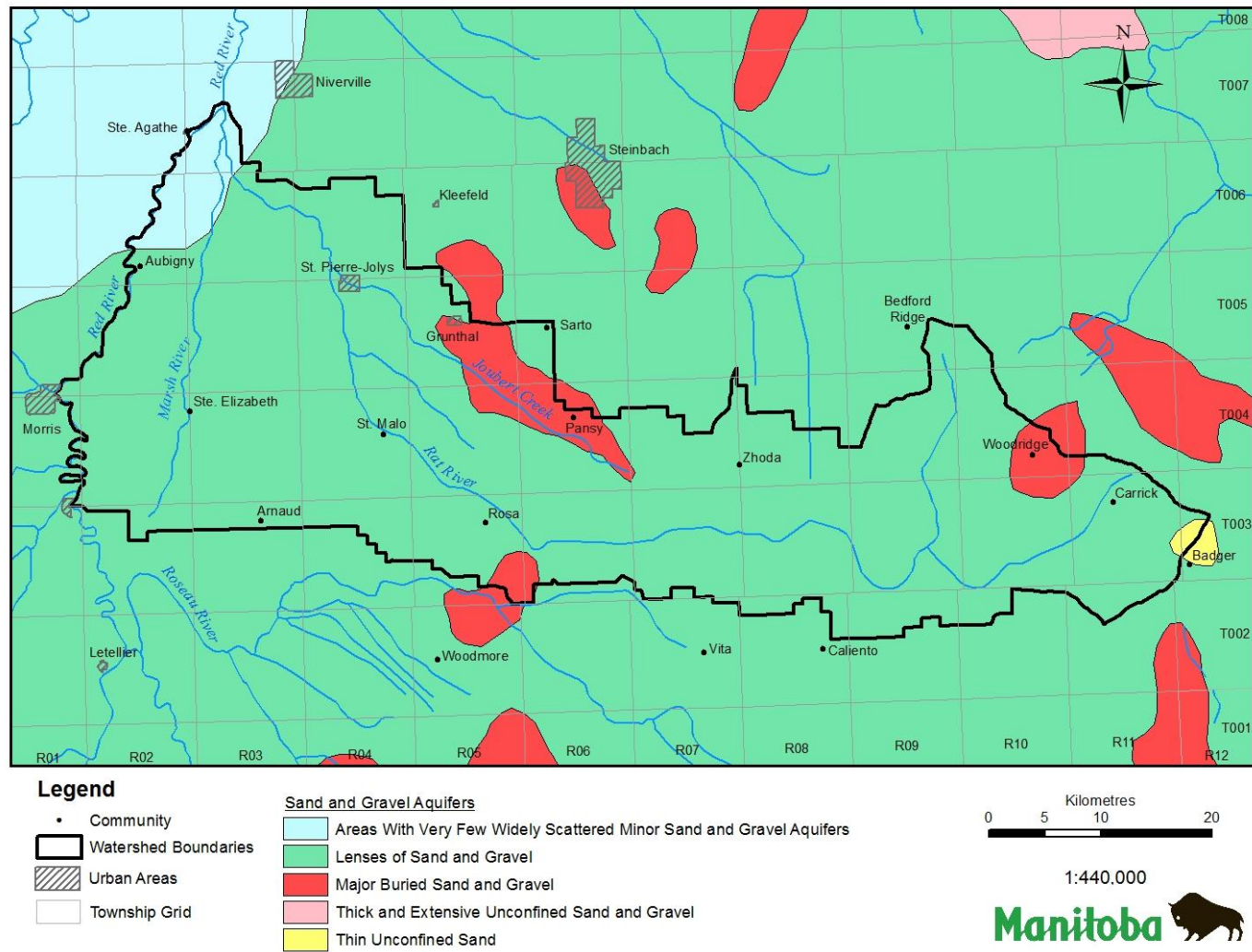


Figure 1: Sand & Gravel Aquifer Map

Rat-Marsh River Watershed: Bedrock Aquifers

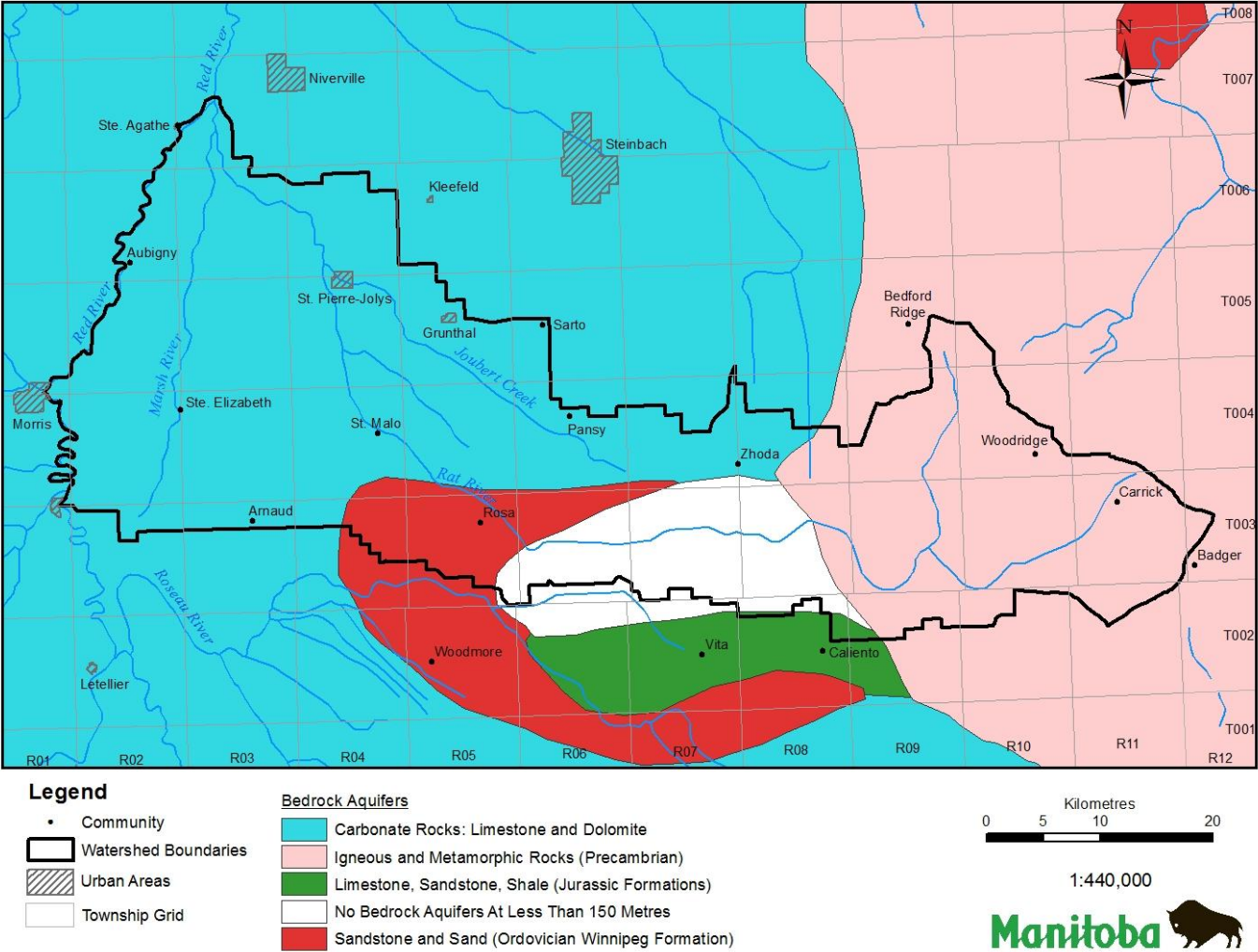


Figure 2: Bedrock Aquifer Map

Rat-Marsh River Watershed: Naturally Occurring Arsenic

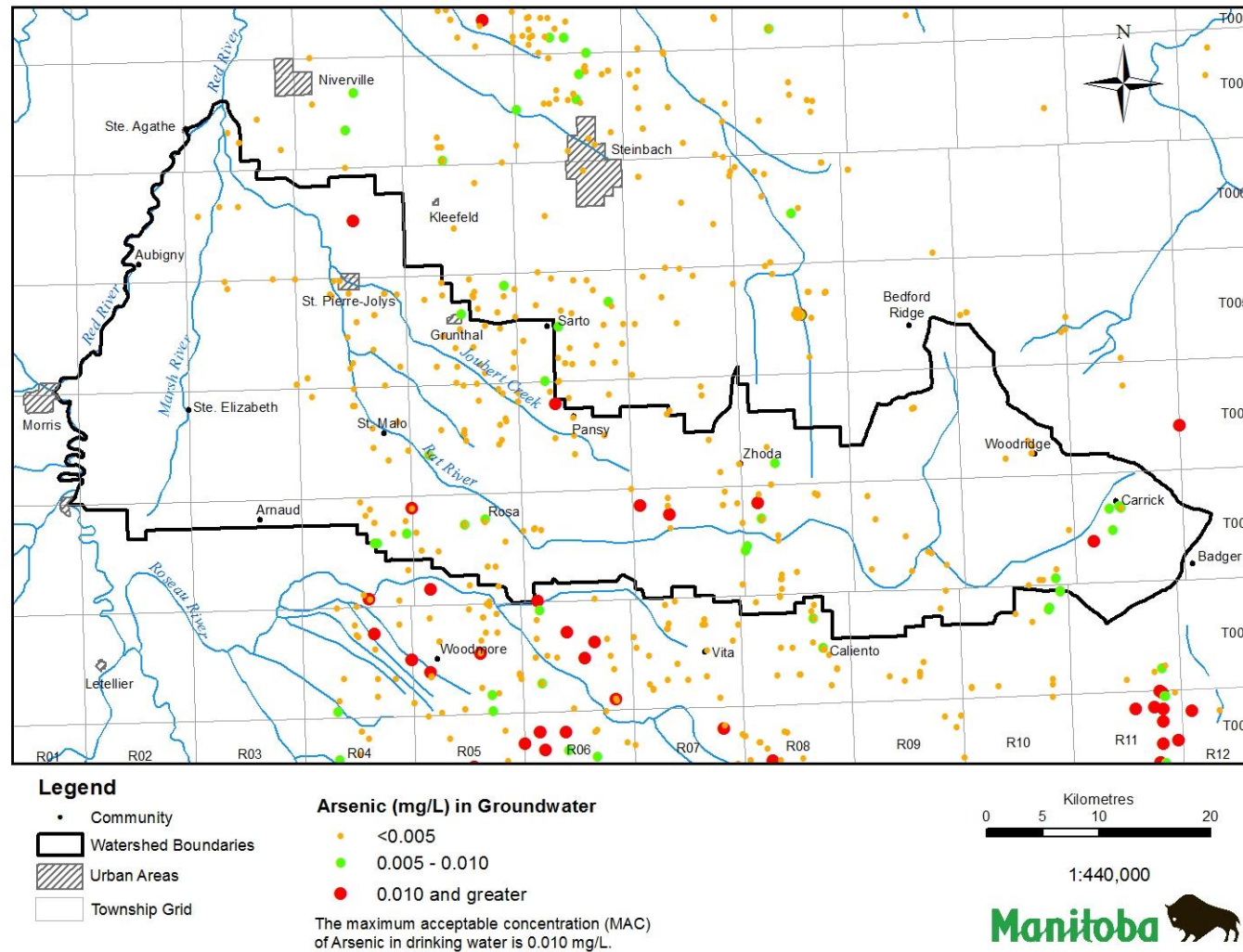


Figure 3: Naturally Occurring Arsenic

Rat-Marsh River Watershed: Naturally Occurring Barium

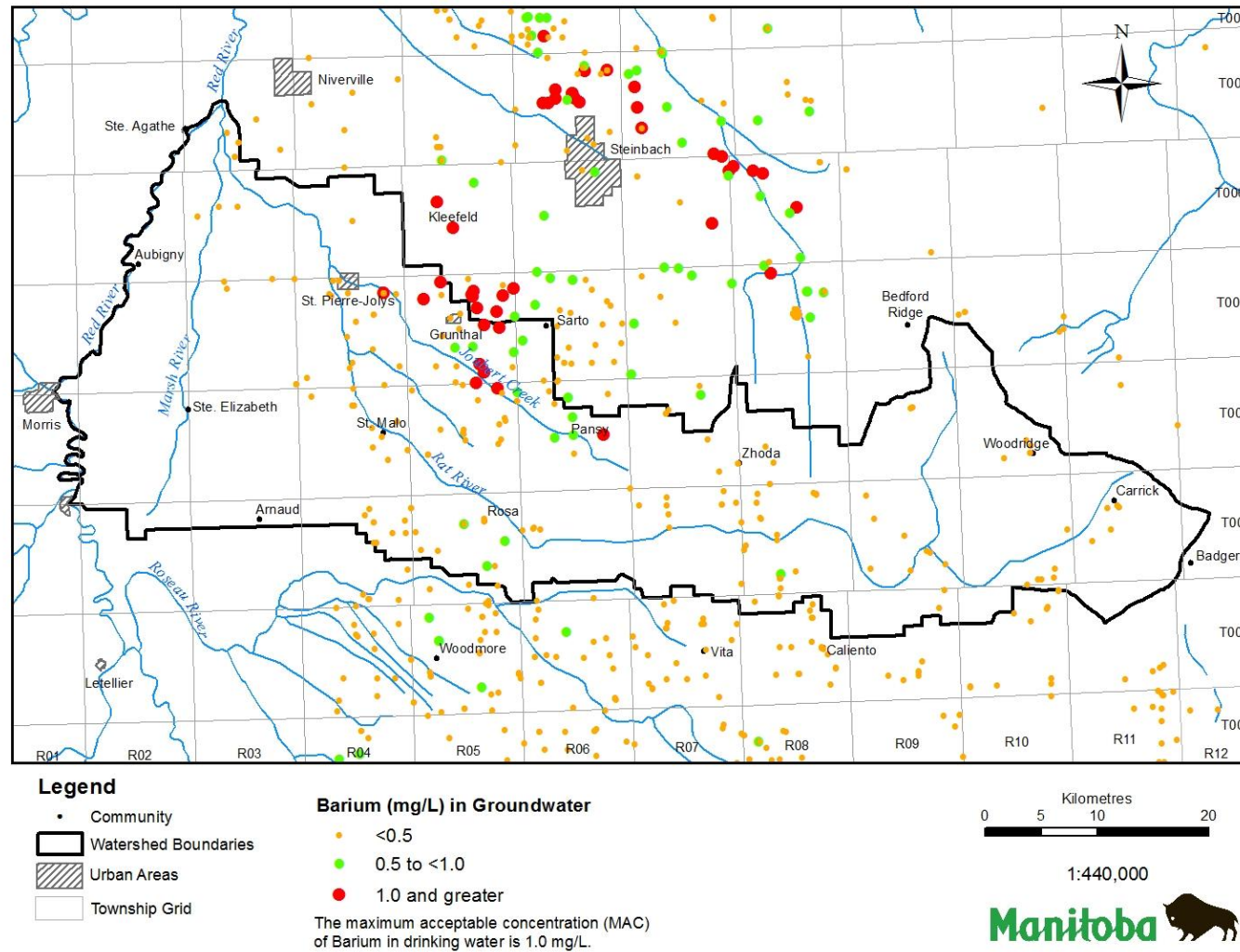


Figure 4: Naturally Occurring Barium

Rat-Marsh River Watershed: Naturally Occurring Fluoride

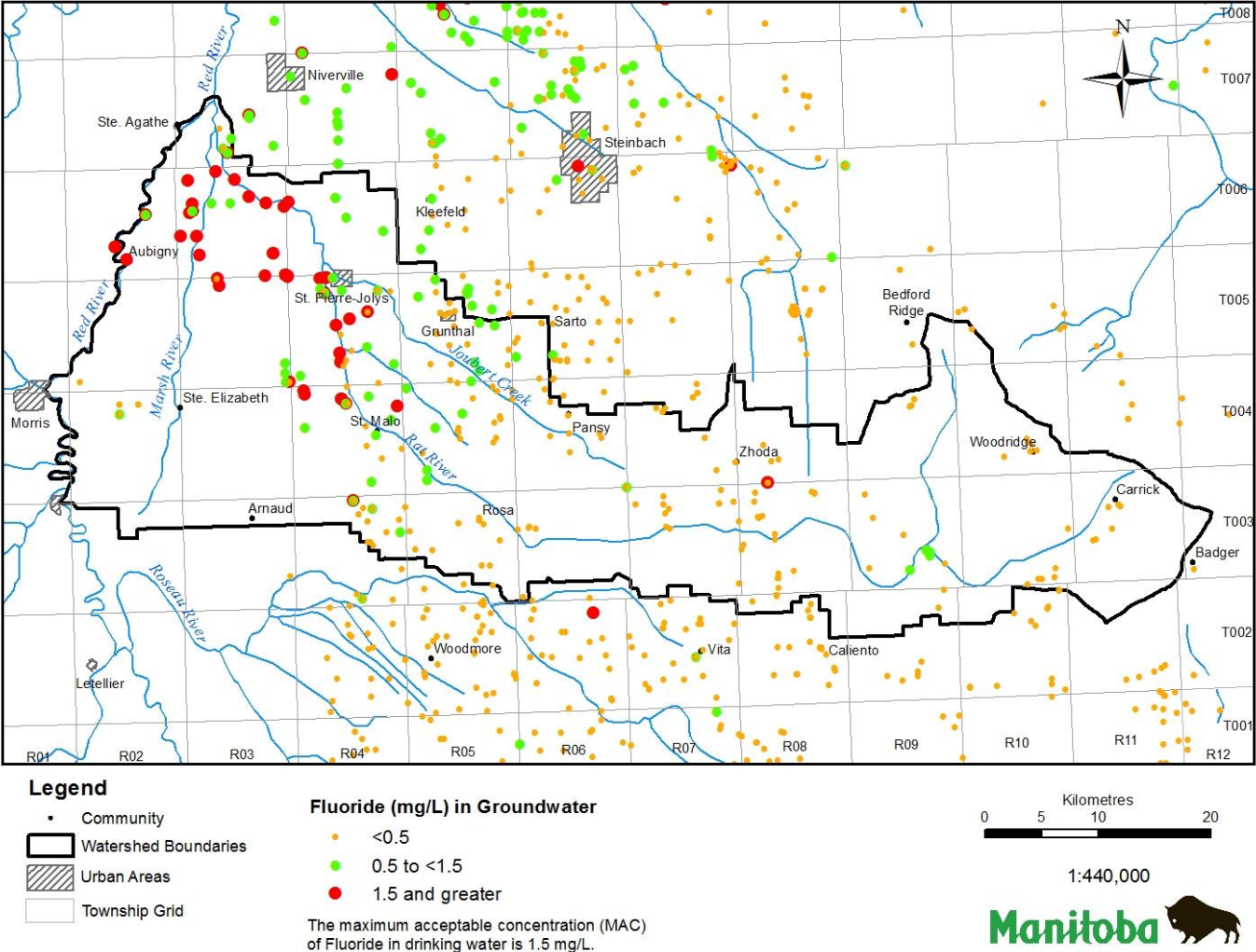


Figure 5: Naturally Occurring Fluoride

Rat-Marsh River Watershed: Fresh Water - Salt Water Boundary

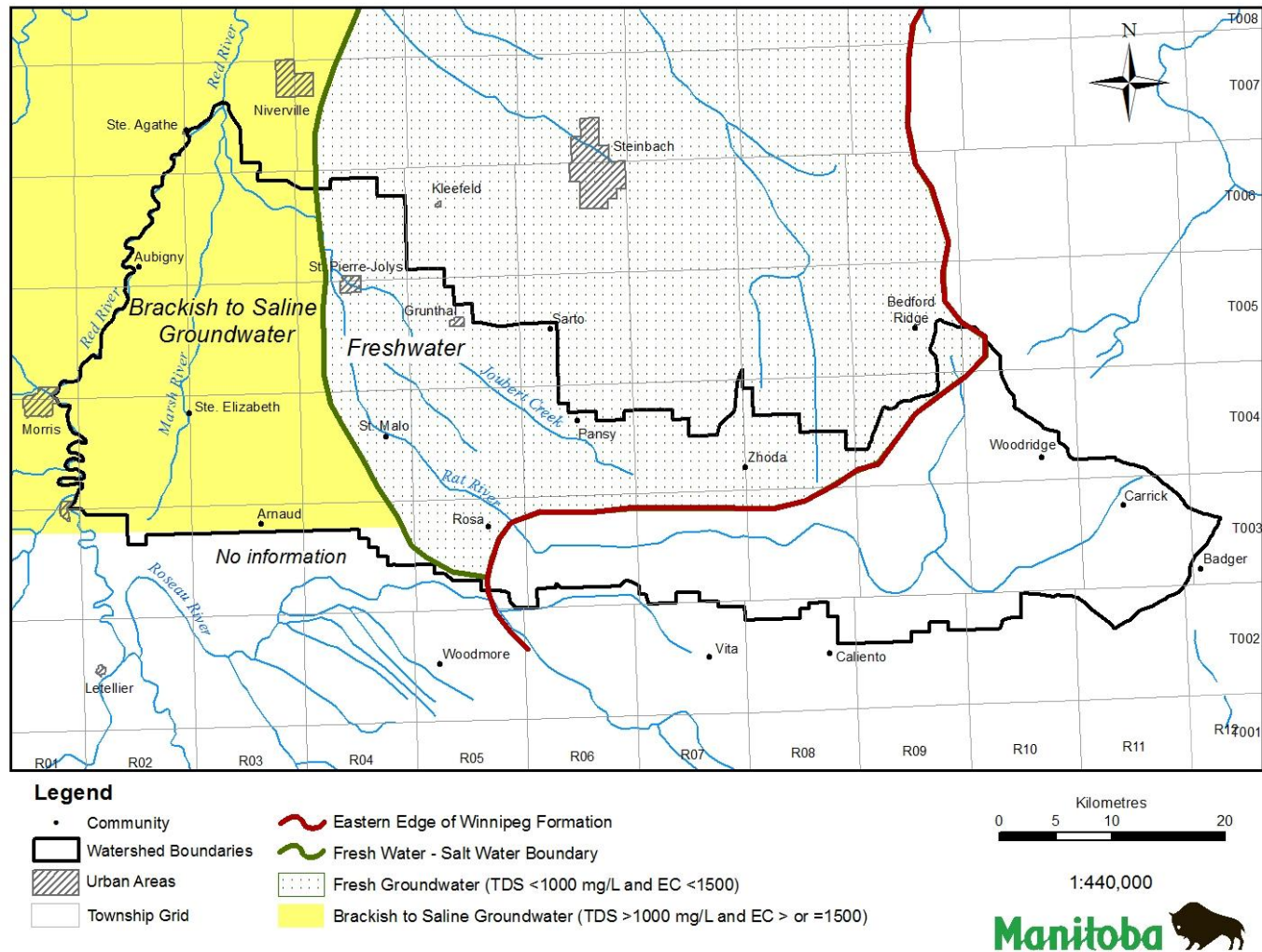


Figure 6: Winnipeg Formation Sandstone Fresh Water-Salt Water Boundary

Rat-Marsh River Watershed: Sand and Gravel Aquifer Observation Wells

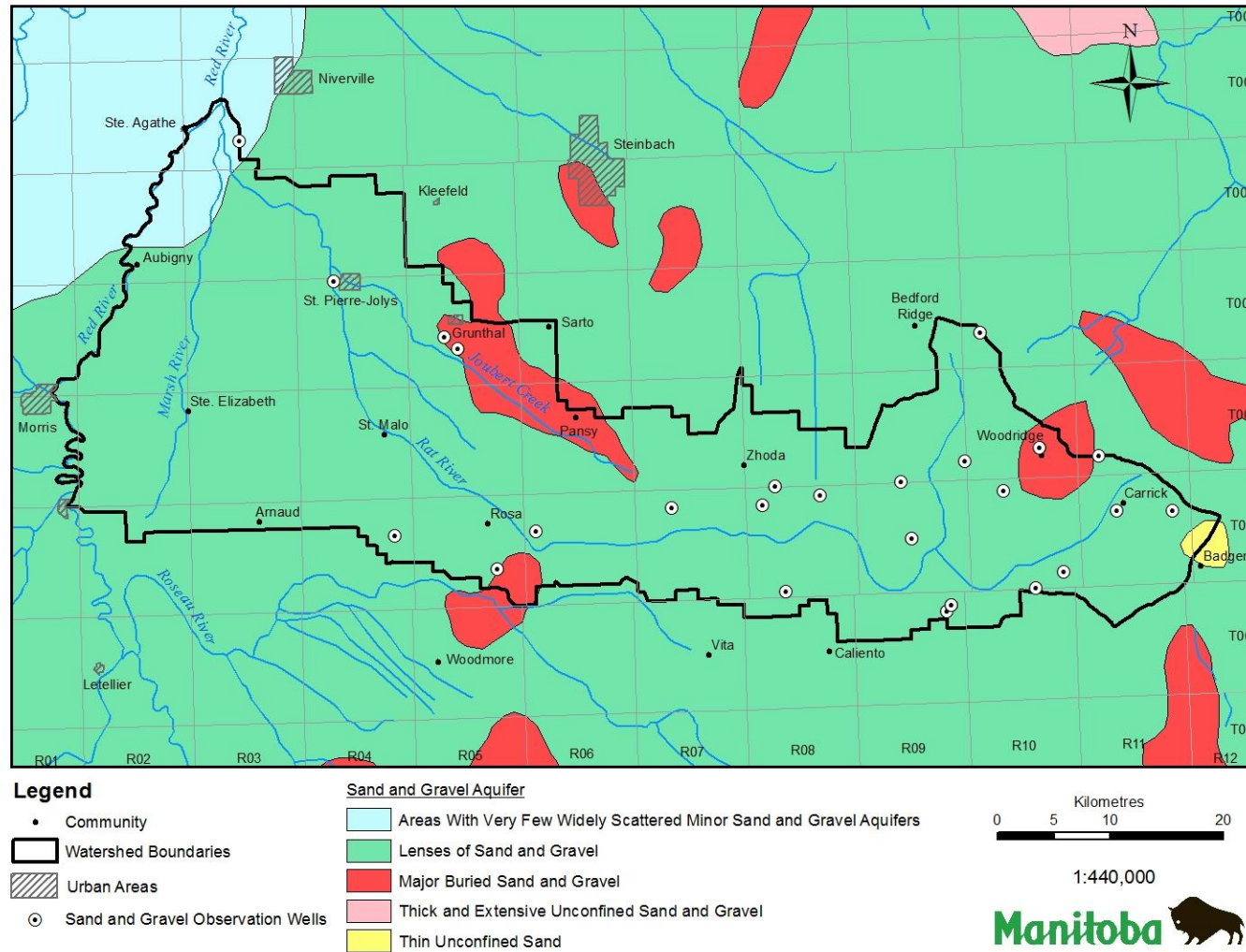


Figure 7: WRB Observation Wells – Sand & Gravel Aquifers

Rat-Marsh River Watershed: Bedrock Aquifer Observation Wells

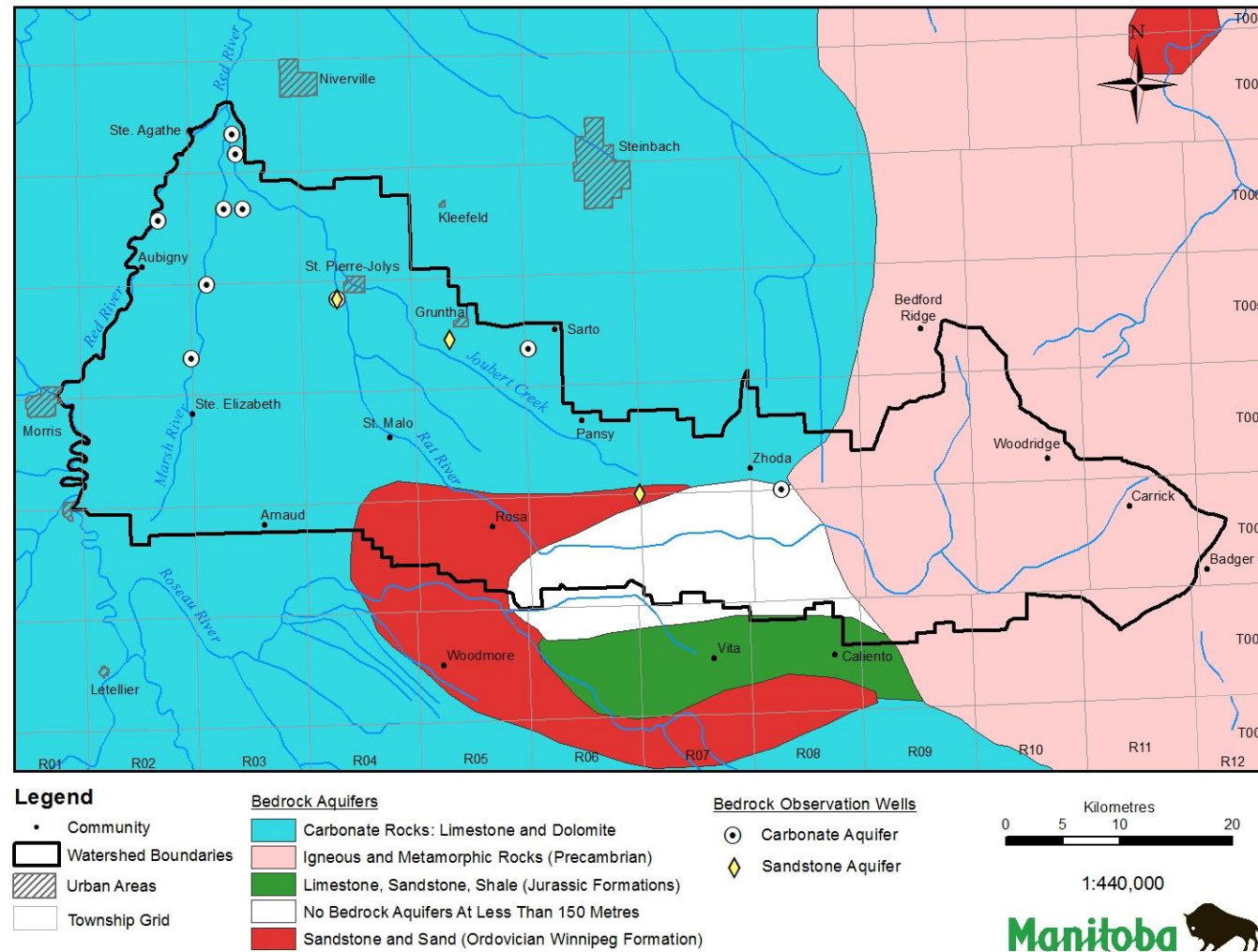


Figure 8: WRB Observation Wells – Bedrock Aquifers

Rat-Marsh River Watershed: Surficial Geology (1:1,000,000)

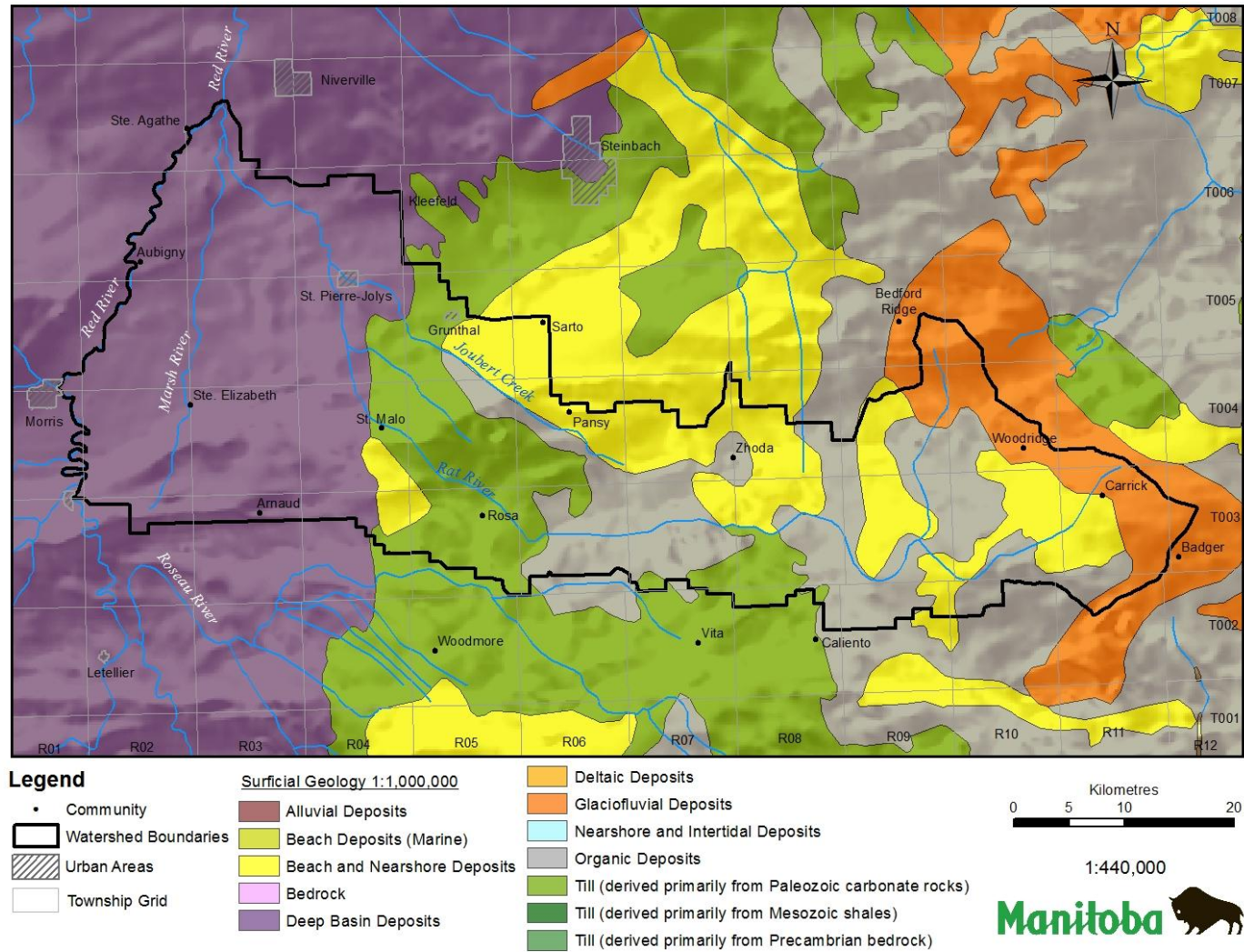


Figure 9: Surficial Geology

Rat-Marsh River Watershed: Major Flowing Well Areas

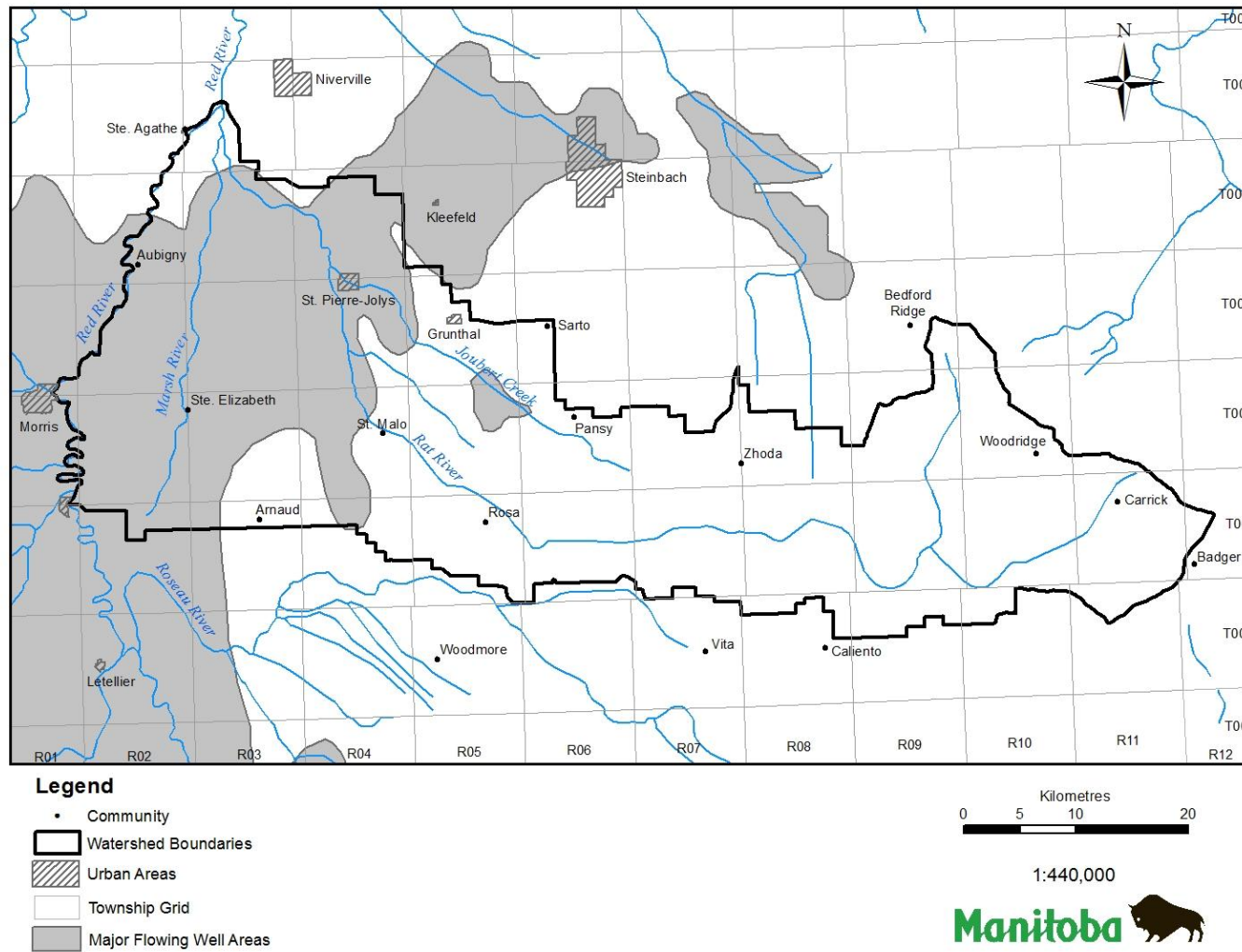


Figure 10: Major Flowing Well Areas