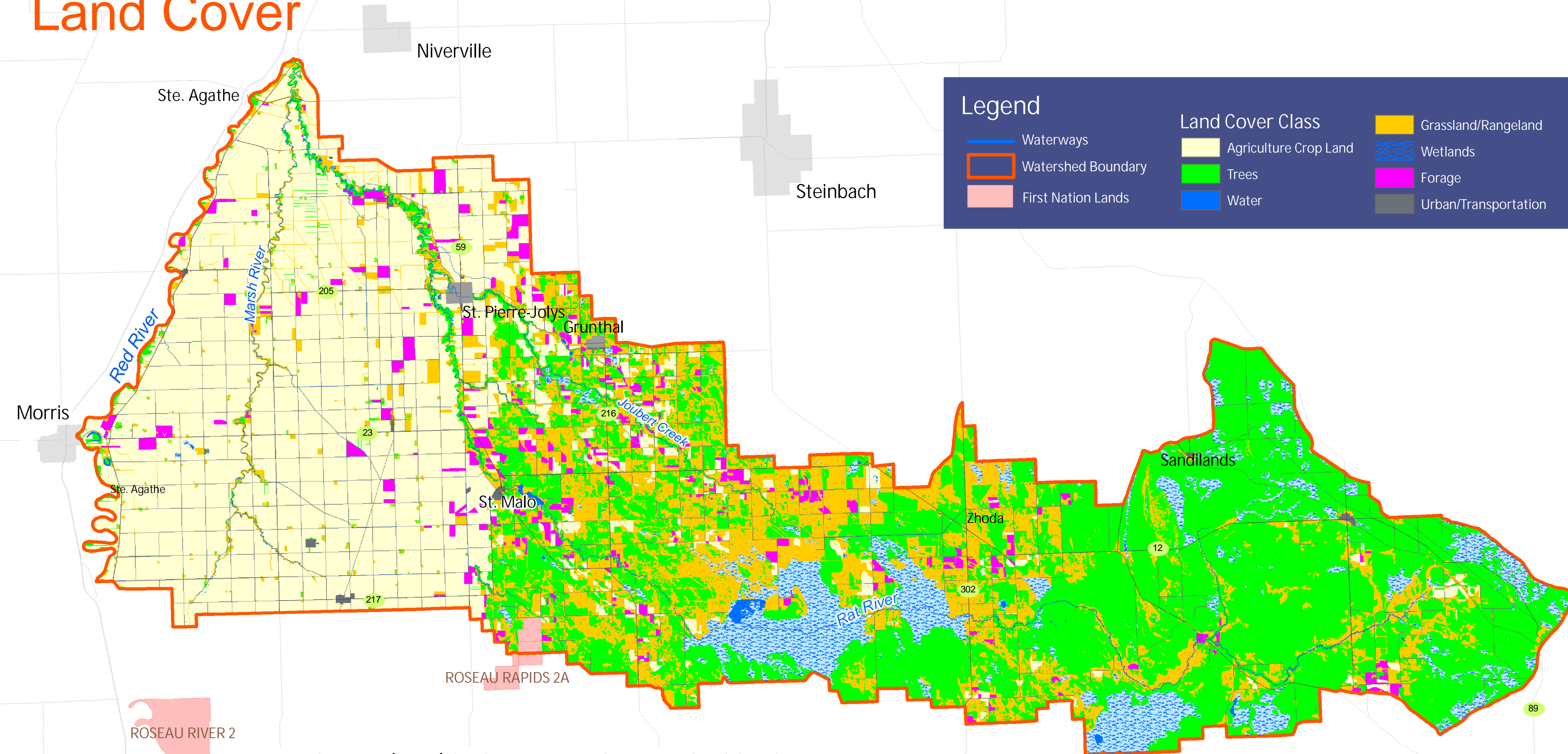


RAT-MARSH RIVER WATERSHED

Land Cover

2



Land cover (2001) in the Rat-Marsh Watershed Study Area.

Class	Area (km ²)	Percent of Watershed
Annual Crop Land	736	34%
Trees	759	35%
Water	12	1%
Grassland	410	19%
Wetlands	149	7%
Forages	59	3%
Urban/Transportation	56	3%
TOTAL	2180	100%

1:163,000

